



## United through the Cure Initiative Bulletin Nº02 – 09 April 2009

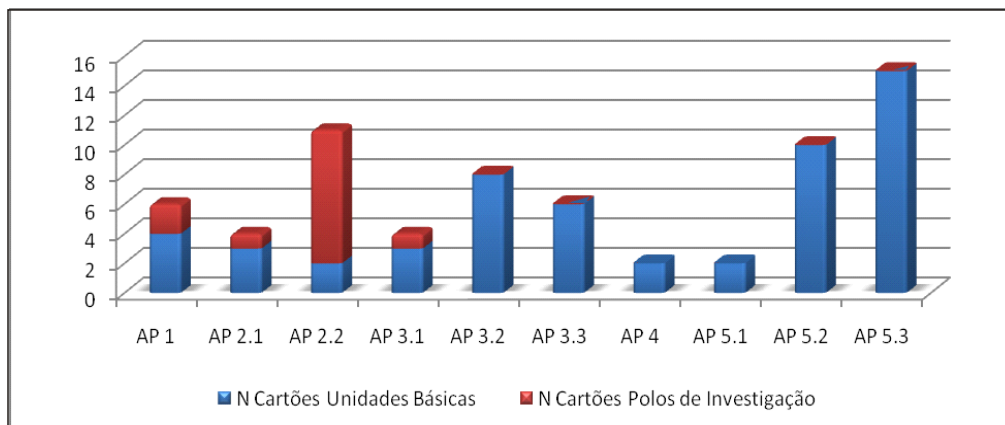
In 2007, the policy developed by the United through the Cure (Unidos Pela Cura) Initiative was implemented for the first time in Rio de Janeiro. The outcomes shown below reflect the progress of this inter-sector tripartite Initiative, which was conceptualised and planned on a participatory basis in order to encourage early diagnoses of childhood cancers.

### REFERRAL CARDS

Covering the period from October 1, 2008 to April 16, 2009, these data were generated by the Referral Card monitoring scheme implemented through this Initiative (SIMCA-UPC). Developed under the technical coordination of the staff at the National Cancer Institute (INCA), this computer system monitored referrals of 55 patients from the municipal healthcare network to the investigation hubs, as well as thirteen patients treated at paediatric out-patient clinics operating in these complexes.

**68 Referrals** of Suspected Childhood Cancers

**Graph 1: Referral Cards distributed by Programme Area (AP).**  
*October 2008 - April 2009\**



Source: United through the Cure computerised system 2009. (\*) Data subject to review.

In all, 33 physicians from the Basic Outpatient Network referred patients to the Investigation Hubs, two of whom worked through the Family Health Programme. Among them, eighteen referred one patient each, ten referred two or three patients, one referred four children and one referred ten children. According to the SIMCA-UPC system, ten of these physicians attended the capacity-building sessions offered through this policy, referring fifteen children.

## TREATMENT AT THESE INVESTIGATION HUBS

Treatment at the Investigation Hubs was ensured by institutions engaged with this policy, based on the type of cancer and the Planning Area of the unit of origin.

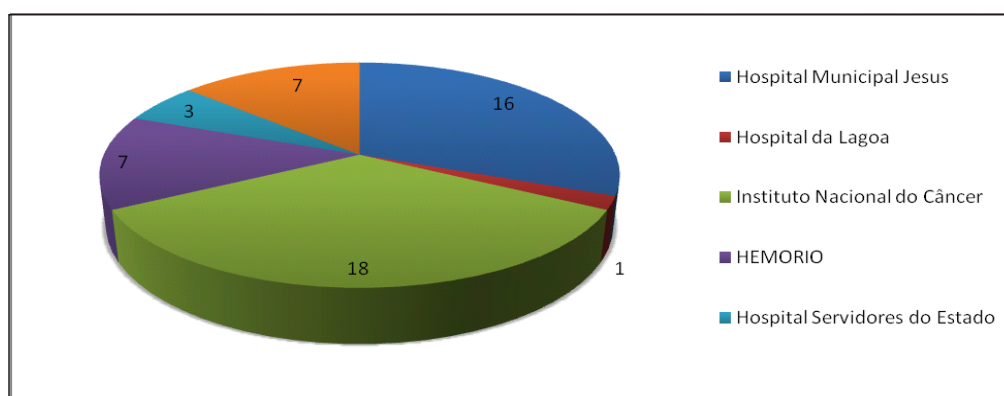
According to the SIMCA-UPC system, 52 (80.6%) referred children were accepted at the Investigation Hubs; thirteen (19.4%) referred children did not report to the Investigation Hubs on the scheduled dates, with no information on three of the thirteen children who did not turn up; eight were referred by services located in the West Zone (AP 5.2 / Campo Grande, three children; and AP 5.3 / Santa Cruz, five children).

Investigation Hubs treat 52 children issued with Referral Cards.

Four Cases of childhood cancer were detected

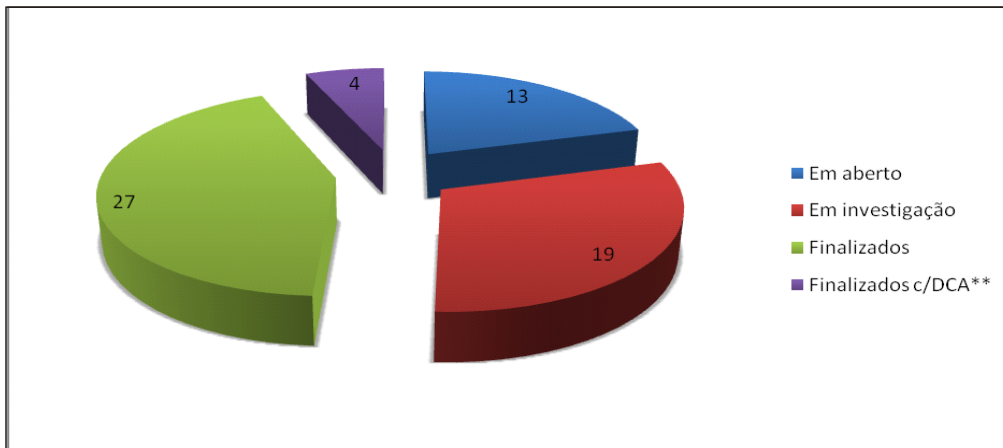
The consultations were conducted by fourteen physicians, mainly at the National Cancer Institute (INCA), where two physicians treated sixteen, six and ten children respectively; and at HEMORIO, where two physicians treated two and five children respectively, totalling seven.

**Graph 2: Distribution of Referral Cards by Investigation Hubs.**  
*October 2008 April 2009\**



Source: United through the Cure computerised system 2009. (\*) Data subject to review.

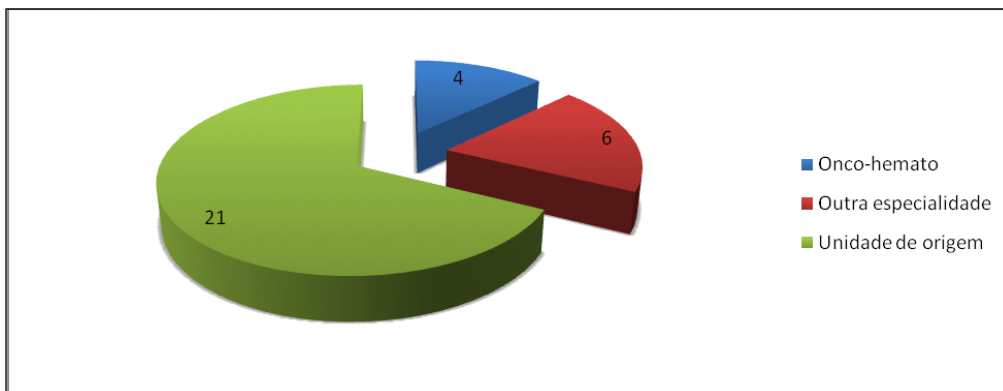
**Graph 3: Status of Referral Cards Used.**  
*October 2008 - April 2009\**



Source: United through the Cure computerised system 2009. (\*) Data subject to review. (\*\*) CCD = Childhood Cancer Diagnosed

Of the 52 cases accepted in the Investigation Hubs, 31 were finalised. Most (21) of the suspected cases returned to their units of origin. Six cases were referred to another paediatric speciality, and four cases of childhood cancers have already been detected.

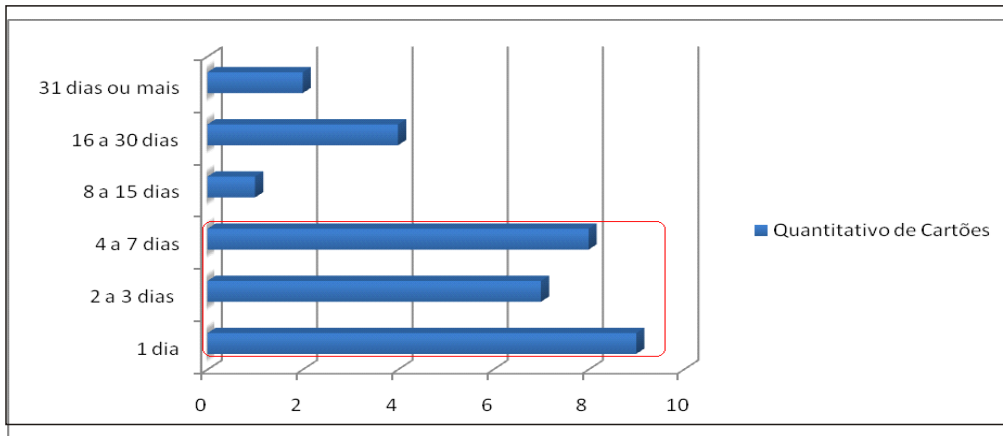
**Graph 4: Distribution of Cases finalised by type of outcome.**  
*October 2008 - April 2009\**



Source: United through the Cure computerised system 2009. (\*) Data subject to review.

It is important to note that, of the 31 cases finalised, 51.6% of the referred children were seen within 72 hours, as agreed among the partners of this Initiative. Most (77.4%) of the children were seen within seven days.

**Graph 5: Average time between scheduling and consultation at the Investigation Hub, finalised cases**  
*October 2008 - April 2009\**

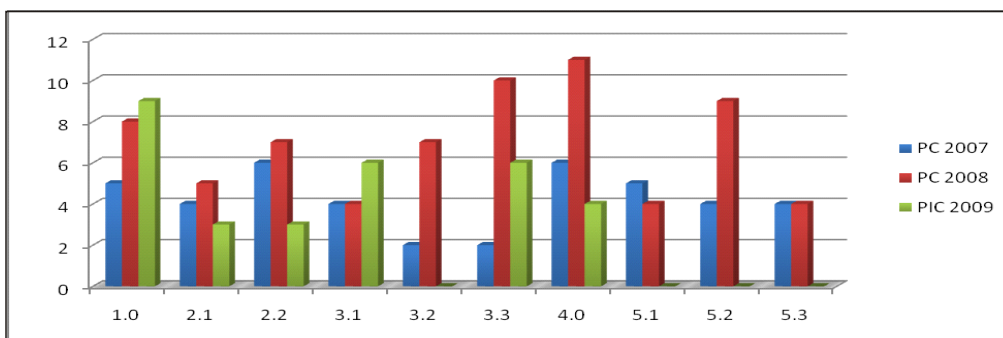


Source: United through the Cure computerised system 2009. (\*) Data subject to review.

## PERMANENT EDUCATION – CAPACITY-BUILDING FOR PAEDIATRICIANS AND GENERAL PRACTITIONERS

According to the Rio de Janeiro Municipal Health and Civil Defence Bureau (SMSDC-RJ), 111 medical practitioners were trained, distributed among the various outpatient clinics in the Programme Area (AP). Among this group of physicians, ten paediatricians referred fifteen children. The practitioners at the Investigation Hubs were also being trained. So far, this includes seven physicians: three from the HMJ, two from the IPPMG and two from the HSE (one also working at the HL). In 2009, 31 physicians have already signed up for capacity-building sessions during the first half of the year.

**Graph 6: Distribution of Trained Paediatricians by AP, 2007/ 2008 and Physicians signed up for 2009\***



Source: Municipal Health and Defence Bureau / Children's Programme (\*) Data subject to review.  
 PC - Trained Paediatricians  
 PIC - Paediatricians signed up for the capacity-building courses